



SMALLWARES





Sani-Safe® (18023) Pizza Cutter, 4", stain-free, high-carbonsteel, replaceable blade, textured, polypropylene white handle, Perfect Cutlery Packaging, Made in USA.

#140172 | **PIZZA CUTTER** Dexter Russell Model P177A-PCP



Sani-Safe® (18193) Sandwich Spreader, 3-1/2", stainless steel blade, textured, polypropylene white handle, Perfect Cutlery Packaging, NSF Certified, Made in USA

Dexter Russell Model S173PCP

#140170 | **SANDWICH SPREADER**



Walco Steak Knife, 10", stainless steel blade, round tip, jumbo 2 rivet handle, polypropylene handle. Case pack of 1 dozen.

#644625 | **STEAK KNIFE** Steelite International Model WL620527



Swing-A-Way Can Opener, crank turn handle.

#140044 | **CAN OPENER** Taylor Precision Model 6090FS



Swing-A-Way Can Opener, portable, white.

#140683 | **CAN OPENER** Taylor Precision Model 407WHFS



Basics® (31600) Chef's/Cook's Knife, 8", stain-free, high carbon steel, textured, polypropylene white handle, NSF Certified.

#141248 | **CHEF KNIFE** Dexter Russell Model P94801



Basics® (31601) Chef's/Cook's Knife, 10", stain-free, high carbon steel, textured, polypropylene white handle, NSF Certified.

#141247 | **CHEF KNIFE** Dexter Russell Model P94802



Sani-Safe® (19753) Pie Knife, 4-1/2" x 2-1/4", 9"OA, stainless steel, offset blade, textured, polypropylene white handle, Perfect Cutlery Packaging, NSF Certified, Made in USA.

#140173 | **PIE KNIFE** Dexter Russell Model S174PCP



SofGrip™ (25353) Poultry/Kitchen Shears, stainless steel, nonslip, stain-free, black/blue, soft rubber grip handle, Clam Packaging, NSF Certified.

#140205 | **KITCHEN SHEARS** Dexter Russell Model SGS01B CP



Walco Steak Knife, 8 5/8 IN", stainless steel blade, round tip, polypropylene handle. Case pack of 2 dozen.

Steelite International Model WL790527

#631500 | **STEAK KNIFE**



Sani-Safe® (7920) Sharpener, EZ edge, hand held, Tungsten Carbide, right or left handed sharpening, styrene plastic, white, Made in USA.

#140232 | **KNIFE SHARPENER** Dexter Russell Model EDGE 1



Sani-Safe® (13583) Sandwich Knife, 9", scalloped edge, offset, stain-free, high-carbon steel, textured, polypropylene white handle, Perfect Cutlery Packaging, NSF Certified, Made in USA.

Dexter Russell Model S163-9SC-PCP

#140190 | **BREAD / SANDWICH KNIFE**



Sani-Safe® (7633) Diamond Sharpener, 12", with electroplated diamond dust, non-slip, polypropylene white handle, Perfect Cutlery Packaging, Made in USA.

#140174 | **SHARPENING STEEL** Dexter Russell Model DDS-12PCP



Basics® (31612) Paring Knife, 3-1/8", scalloped, edge, tapered point, stain-free, high-carbon steel, polypropylene white handle, NSF Certified.

#140223 | **PARING KNIFE** Dexter Russell Model P94846



Sani-Safe® (15303) Cook's Style Paring Knife, 3-1/4", stain-free, high-carbon steel, non-slip, textured, polypropylene white handle, Perfect Cutlery Packaging, NSF Certified, Made in USA.

#141502 | **PARING KNIFE** Dexter Russell Model S104PCP



Utility Tongs, 9", 1 pc., non-slip, heat resistant up to 220°F, polypropylene coated handle, stainless steel, black.

#141428 | **UTILITY TONGS** Winco Model UTPH-9K



Utility Tongs, 12", 1 pc., nonslip, heat resistant up to 220°F, polypropylene coated handle, stainless steel, black.

#141429 | **UTILITY TONGS** Winco Model UTPH-12K



Carlisle - Carly® Salad Tongs, 6"L, temperature range up to 212° F, dishwasher safe, plastic, black, NSF, Made in USA.

CFS Brands Model 460603

#139028 | **SERVING / UTILITY TONGS**



Can Tapper, 4", nickel plated.

#143092 | **BOTTLE OPENER** TableCraft Products Model CT109



Utility Tongs, 9", coiled spring, scalloped edge, heavy weight 0.9 millimeter stainless steel.

#141425 | **UTILITY TONGS** Winco Model UT-9



Utility Tongs, 12", coiled spring, scalloped edge, heavy weight 0.9 millimeter stainless steel.

#141426 | **UTILITY TONGS** Winco Model UT-12



SoftSpoon™, 16-1/2" Spoon-Shaped Spatula, Thermostatic blade & strong polypropylene I-beam handle are molded together to form sanitary seal, dishwasher safe, flexible blade retains shape to 212°, NSF, Made in USA.

#140097 | **SPATULA** Vollrath Model 52116



Basics® (31645) Hamburger Turner, 6" x 3", square end, stainless steel, offset blade with polypropylene handle, NSF Certified.

#141230 | **SOLID TURNER** Dexter Russell Model P94855



Sani-Safe® (19783) Dough Cutter/Scraper, 6" x 3", stainless steel blade and textured, polypropylene white handle, Perfect Cutlery Packaging, NSF Certified, Made in USA.

Dexter Russell Model S196PCP

#140171 | **DOUGH CUTTER/SCRAPER**



Basics® (31641) Pancake Turner, 4" x 2-1/2", stainless steel, offset blade with polypropylene handle, NSF Certified.

#141231 | **SOLID TURNER** Dexter Russell Model P94851



Spatula, 16-1/4", high heat/resistant to 500°F or 260°C, notched silicone blade, dishwasher safe, nylon handle, BPA free.

#139016 | **SPATULA** TableCraft Products Model 1864



Sani-Safe® (19663) Mini Turner, 2-1/2", stainless steel, offset blade, textured, polypropylene white handle, Perfect Cutlery Packaging, NSF Certified, Made in USA.

#140189 | **SOLID TURNER** Dexter Russell Model S171PCPP94851



Spatula, 10-1/4", high heat/resistant to 500°F or 260°C, notched silicone blade, dishwasher safe, nylon handle, BPA free.

#139012 | **SPATULA** TableCraft Products Model 1862



Spatula, 14", high heat/resistant to 500°F or 260°C, notched silicone blade, dishwasher safe, nylon handle, BPA free.

#139013 | **SPATULA** TableCraft Products Model 1863



Browne USA Foodservice Model 573330

#139045 | **STANDARD ROUND BOWL DISHER**



TableCraft Products Model 2106

#140501 | **STANDARD ROUND BOWL DISHER**



TableCraft Products Model 2108

#140503 | **STANDARD ROUND BOWL DISHER**



TableCraft Products Model 2110

#140505 | **STANDARD ROUND BOWL DISHER**



TableCraft Products Model 2112

#140507 | **STANDARD ROUND BOWL DISHER**



TableCraft Products Model 2116

#140509 | **STANDARD ROUND BOWL DISHER**



TableCraft Products Model 2120

#140511 | **STANDARD ROUND BOWL DISHER**



TableCraft Products Model 2130

#140515 | **STANDARD ROUND BOWL DISHER**





Carlisle - Sparta® Chef Series™ Pastry Brush, 2" wide epoxy-set bristles, soft-flagged, brown plastic ferrules, lacquered hardwood handle, nylon, white, Made in USA.

#140558 | PASTRY BRUSH CFS Brands Model 4039700



Carlisle - Sparta Meteor® Pastry/Basting Brush, 3" wide, double-boiled, water-resistant, soft-flagged molded-in bristles, white plastic handle with hook, boars hair, bleached.

#140605 | PASTRY BRUSH CFS Brands Model 4037900



Food Portioner, 2 oz., perforated, one-piece, stainless steel, Prime, blue, NSF

Winco Model FPPN-2

#140436 | PORTION CONTROL SPOON / LADLE



Food Portioner, 2 oz., solid, one-piece, stainless steel, Prime, blue, NSF.

Winco Model FPSN-2

#140523 | PORTION CONTROL SPOON / LADLE



Food Portioner, 3 oz., solid, one-piece, stainless steel, Prime, tan, NSF.

Winco Model FPSN-3

#140527 | PORTION CONTROL SPOON / LADLE



Food Portioner, 4 oz., perforated, one-piece, stainless steel, Prime, gray, NSF

Winco Model FPPN-4

#140434 | PORTION CONTROL SPOON / LADLE



Dinner Knife, 8", 18/0 stainless steel, medium weight, vibro finish, Windsor. Case pack of 1 dozen.

Winco Model 0002-08

#139064 | **DINNER KNIFE**



Teaspoon, 5-7/8", 18/0 stainless steel, medium weight, vibro finish, Windsor. Case pack of 1 dozen.

Winco Model 0002-01

#139063 | **COFFEE / TEASPOON**



Bouillon Spoon, 6", 18/0 stainless steel, medium weight, vibro finish, Windsor. Case pack of 1 dozen.

Winco Model 0002-04

#139062 | **SOUP / BOUILLON SPOON**



Dinner Fork, 7", 18/0 stainless steel, medium weight, vibro finish, Windsor. Case pack of 1 dozen.

Winco Model 0002-05

#139065 | **DINNER FORK**



Ladle, 2 oz., 10-1/2" handle, one-piece, stainless steel.

Winco Model LDI-2

#141412 | **LADLE**



Carlisle - Salad/Buffer Spoon, 3/4 oz., 10"L, solid, temperature range up to 212° F & dry heat up to 270° F, notched handle, dishwasher safe, plastic, black, NSF, Made in USA.

CFS Brands Model 447003

#139026 | **SALAD BAR SERVING SPOON**



Basting Spoon, 15", slotted, with 1.5 mm stainless steel.

Winco Model BSST-15H

#140424 | **SALAD BAR SERVING SPOON**



French Whip, 10" long, stainless steel.

Winco Model FN-10

#141431 | **FRENCH WHIP / WHISK**





Portion Control Scale, digital, 22 lb x .1 oz./10 kg x 1 g capacity, 0.9" LCD display, 7.15" x 7.15" removable stainless steel platform with marine edge, field calibration feature, tare & hold function, auto-off & disable auto-off feature (powered by batteries), low battery & overload indicators, uses AC adapter (included) or (2) AAA batteries (not included), NSF.

#140039 | **PORTION SCALE** Taylor Precision Model TE22FTPCP



TableCraft Products Model 662K

Economy Pump Kit, includes: 1 oz., 11" dip tube, economy pump (model number 662), 1 of each size 662 series tops with hole - 38MM, 89MM, 110MM, NT110MM & 160MM), dishwasher safe, plastic, white.

#140650 | **CONDIMENT SYRUP PUMP ONLY**



Winco Model FC-PL

Flatware Cylinder, 5"H, fits 4" dia. hole, perforated, plastic.

#141476 | **FLATWARE HOLDER, CYLINDER / INSERT**



Measuring Cup Set, 4-piece set includes: 1/4, 1/3, 1/2 & 1 cup, stainless steel.

#141393 | **MEASURING CUP** Winco Model MCP-4P



TableCraft Products Model 57S

Pourer, 12 oz., fluted glass, dishwasher safe, stainless steel side flap top (design matches 657).

#140291 | **SUGAR POURER SHAKER**



TableCraft Products Model 260

Cheese Shaker, 6 oz., swirled glass jar (dishwasher safe), chrome plated perforated top (hand wash only) (fits rack model numbers 260R, 260RBK, 406-2R & 406-3R).

#140293 | **CHEESE / SPICE SHAKER**



TableCraft Products Model H159

Dredge, 10 oz., 2-3/4" dia. x 3-3/4"H, with handle, dishwasher safe, stainless steel

#140539 | **SHAKER / DREDGE**



TableCraft Products Model 748A

All Purpose Dispenser, 48 oz., polyethylene jar, dishwasher safe, almond ABS top, BPA free, Made in USA

#140458 | **SYRUP POURER**



Camwear® Measuring Cup, 1 pint, molded handle, dishwasher safe, polycarbonate, clear, NSF

#140541 | **MEASURING CUP** Cambro Model 50MCCW135



Camwear® Measuring Cup, 1 qt., molded handle, dishwasher safe, polycarbonate, clear, NSF.

#140546 | **MEASURING CUP** Cambro Model 100MCCW135



Camwear® Measuring Cup, 4 qt., molded handle, dishwasher safe, polycarbonate, clear, NSF.

#140548 | **MEASURING CUP** Cambro Model 400MCCW135



Cooper-Atkins Model 335-01-1

Refrigerator/Freezer Thermometer, temperature range -40 to 80°F (-40 to 25°C), ±2°F (±1°C) temperature accuracy, non-toxic, horizontal glass tube, hangs, stands or mounts permanently, with aluminum case and magnifying glass, stainless steel hangers/mounting brackets, HACCP, NSF.

#746000 | **REFRIG/FREEZER THERMOMETER**



Cooper-Atkins Model 25HP-01-1

Refrigerator/Freezer/Dry Storage Thermometer, colored 2" (5cm) dia. dial zoned with specific applications and HACCP guidelines, temperature range -20 to 80°F (-29 to 27°C), ±2°F (±1°C) temperature accuracy, hang or stand, stainless steel, NSF.

#746015 | **REFRIG/FREEZER THERMOMETER**



Cooper-Atkins Model 335-01-1

Oven Thermometer, HACCP referenced 2" (5 cm) dia. dial with colored zone highlighting proper oven temp. range, temperature range 100° to 600°F (50° to 300°C), ±25°F (12.5°C) temperature accuracy, NSF.

#746055 | **OVEN THERMOMETER**





Taylor Precision Model 8791

Dishwasher Thermometer, digital, 32° to 194°F (0° to 90° C) temperature range, +/- 1.8°F (1°C) accuracy, water proof, measures surface temperature of water, for use in commercial dishwashers, ABS plastic, CR2032 battery included, IP67 rated, FDA Compliant, NSF.

#139141 | **DISHWASHER THERMOMETER**



Cooper-Atkins Model 1246-02-1

Pocket Test Thermometer, dialtype with 5" stem, 1" diameter dial, .140" diameter shaft, temperature range 0 to 220°F, ±2°F temperature accuracy, includes adjustment tool and pocket clip, red protective sheath with antimicrobial additive, bi-metal, NSF.

#141215 | **POCKET THERMOMETER**



Cooper-Atkins Model DFP450W-0-8

Test Thermometer, digital display with stem, 4-3/4" (121mm) shaft length, 3/4" (19mm) tip, -40 to 450°F/-40° to 232°C temperature range, ±2°F/1°C temperature accuracy, waterproof, update button, 1.5v/#392 battery, antimicrobial additive, NSF, CE, WEEE, RoHS.

#141240 | **POCKET THERMOMETER**



Cooper-Atkins Model 9150-0-8

Antibacterial Probe Wipes, 2"x 2". 200 count box.

#746305 | **THERMOMETER PROBE CLEANING WIPES**



Chef Revival Model 600BAW

Chef Revival® Economy Bib Apron, 34" x 34", poly/cotton blend fabric, pencil pocket, white, Chef 24/7®.

#140680 | **BIB APRON**



Chef Revival Model 705MSK

Chef Revival® Multi-Stripe Towel, 15" x 26", 100% cotton terry cloth, Chef 24/7®

#140660 | **KITCHEN TOWEL**



Chef Revival Model 703HB

Chef Revival® Herringbone Towel, 15" x 26" non-linting, heavyweight 100% cotton, Chef 24/7®.

#140662 | **KITCHEN TOWEL**



Chef Revival Model 700BRT28

Chef Revival® Bar Mop Towel, 28 oz., 16" x 19", 100% high grade cotton, narrow ribbed construction, Chef 24/7®

#141323 | **BAR TOWEL**



Oven Mitt, 17", non-slip, flame resistant up to 500°F (260°C), stain & water resistant, hanging loop, hand-wash only, neoprene shell, cotton fill & lining, black.

#141377 | **OVEN MITT** Winco Model OMNP-17



San Jamar - Pan Grabber, 9-1/2" x 11", with elastic wrist strap, protects to 400°F, machine washable, two thick terry cloth layers.

#140670 | **POT HOLDER** CFS Brands Model 803PG



Jamar - Oven Mitt, 17", temperature range: up to 500° (260° C) for 30 seconds, heavy duty institutional grade terry cloth, machine washable,

#140665 | **OVEN MITT** CFS Brands Model 817TM



San Jamar - Pot Holder, 7" x 7", heat protection to 350°F, nonstick coating, wipes clean, hanging loop, silicone, silver.

#140705 | **POT HOLDER** CFS Brands Model 802SPH



San Jamar - BestGuard™ Oven Mitt, 13", temperature range up to 450° F (232° C) for 30 seconds, ambidextrous, Webguard™ protection, fire retardant, clean with damp cloth, tan.

#100400 | **OVEN MITT** CFS Brands Model 800FG13



San Jamar - BestGuard™ Oven Mitt, 17", temperature range up to 450° F (232° C) for 30 seconds, ambidextrous, Webguard™ protection, fire retardant, clean with damp cloth, tan.

#140672 | **OVEN MITT** CFS Brands Model 800FG17



Sheet Pan/Serving Tray,
1/4 size, 9-1/2" x 13",
closed bead, 20 gauge,
3003 aluminum.

#141299 | **BUN / SHEET PAN** Winco Model ALXP-1013



Baking Pan, 17-3/4"
x 11-1/2" X 2-1/4"H,
rectangular, drop
handles, aluminum.

#141453 | **BAKE PAN** Winco Model ALBP-1218



Sheet Pan/Serving
Tray, 1/2 size, 13" x
18", closed bead,
20 gauge, 3003
aluminum.

#140376 | **BUN / SHEET PAN** Winco Model ALXP-1318



Sheet Pan, full size,
18" x 26", closed
bead, 18 gauge,
3003 aluminum.

#140378 | **BUN / SHEET PAN** Winco Model ALXP-1826



Sheet Pan, 2/3
size, 16" x 22",
closed bead, 19
gauge, 3003
aluminum.

#141328 | **BUN / SHEET PAN** Winco Model ALXP-1622



Sheet Pan Cover, 18"L x
13"W, fits most half-size
pans, dishwasher safe,
PA free, polypropylene,
clear, NSF

#130146 | **BUN / SHEET PAN, COVER** Winco Model CXP-1318



Sheet Pan Cover, 13"L
x 10"W, rectangular,
fits 1/4 size sheet pans,
dishwasher safe, BPA
free, polypropylene,
clear, NSF.

#130144 | **BUN / SHEET PAN, COVER** Winco Model CXP-1013



Sauce Cup, 2-1/2 oz.,
round, stainless steel.
Case pack of 1 dozen.

Winco Model SCP-25

#141385 | **RAMEKIN / SAUCE CUP, METAL**





Arkadia™ Stock Pot,
40 quart, 3000 series
aluminum (Refer to
vollrathfoodservice.com
for full warranty policy).

#141269 | **STOCK POT** Vollrath Model 7310



Arkadia™ Stock Pot, 20 quart,
3000 series aluminum (Refer to
vollrathfoodservice.com
for full warranty policy).

#141267 | **STOCK POT** Vollrath Model 7305



Squeeze Bottle, 12 oz.,
38mm opening, natural
cone tip, dishwasher
safe, soft polyethylene
PerfectFlex™, clear, Made
in USA. Case pack of 1
dozen.

#140110 | **SQUEEZE BOTTLE** TableCraft Products Model 112C-1



Squeeze Bottle, 24 oz.,
38mm opening, natural
cone tip, dishwasher
safe, soft polyethylene
PerfectFlex™, clear, Made
in USA.
Case pack of 1 dozen.

#140111 | **SQUEEZE BOTTLE** TableCraft Products Model 124C-1



WideMouth™ Squeeze
Bottle, 16 oz., 63mm
opening, natural cone tip,
dishwasher safe, soft
polyethylene, clear, Made
in USA, NSF. Case pack
of 2 dozen.

#140112 | **SQUEEZE BOTTLE** TableCraft Products Model 11663C



WideMouth™ Squeeze
Bottle, 24 oz., 63mm
opening, natural cone tip,
dishwasher safe, soft
polyethylene, clear, Made
in USA, NSF. Case pack
of 1 dozen.

#140113 | **SQUEEZE BOTTLE** TableCraft Products Model 12463C



Invertatop™ Squeeze
Dispenser, 12 oz.,
ValveTop™ 53mm
opening, dishwasher
safe, polyethylene,
clear, NSF.

#140122 | **SQUEEZE BOTTLE** TableCraft Products Model 12SV



Invertatop™ Squeeze
Dispenser, 16 oz.,
ValveTop™ 53mm dual
opening, dishwasher safe,
polyethylene, clear, NSF.

#140125 | **SQUEEZE BOTTLE** TableCraft Products Model 16SV





Carlisle - Squares Food Storage Container Lid, fits 2 - 4 qt Squares food storage containers, polyethylene, forest green, NSF, Made in USA.

CFS Brands Model 1197008

#140640 | FOOD STORAGE CONTAINER COVER



Carlisle - Squares Food Storage Container, 2 qt., 7-1/8" x 3-4/5"H, square, reinforced stacking lugs, wide handles, date indicator, printed measurements, dishwasher safe, polycarbonate, clear with green print, NSF, Made in USA.

CFS Brands Model 1195007

#140620 | FOOD STORAGE CONTAINER



Carlisle - Squares Food Storage Container, 4 qt., 7-1/8" x 7- 3/10"H, square, reinforced stacking lugs, wide handles, date indicator, printed measurements, dishwasher safe, polycarbonate, clear with green print, NSF, Made in USA.

CFS Brands Model 1195107

#140621 | FOOD STORAGE CONTAINER



Carlisle - Squares Food Storage Container Lid, fits 12 - 22 qt Squares food storage containers, polyethylene, royal blue, NSF, Made in USA.

CFS Brands Model 1197260

#140642 | FOOD STORAGE CONTAINER COVER



Carlisle - Squares Food Storage Container Lid, fits 6 - 8 qt Squares food storage containers, polyethylene, red, NSF, Made in USA.

CFS Brands Model 1197105

#140641 | FOOD STORAGE CONTAINER COVER



Carlisle - Squares Food Storage Container, 6 qt., 8-3/4" x 7- 3/10"H, square, reinforced stacking lugs, wide handles, date indicator, printed measurements, dishwasher safe, polycarbonate, clear with red print, NSF, Made in USA.

CFS Brands Model 1195207

#140622 | FOOD STORAGE CONTAINER



Carlisle - Squares Food Storage Container, 8 qt., 8-3/4" x 9"H, square, reinforced stacking lugs, wide handles, date indicator, printed measurements, dishwasher safe, polycarbonate, clear with red print, NSF, Made in USA.

CFS Brands Model 1195307

#140623 | FOOD STORAGE CONTAINER



Carlisle - Squares Food Storage Container, 12 qt., 11-1/8" x 8- 1/4"H, square, reinforced stacking lugs, wide handles, date indicator, printed measurements, dishwasher safe, polycarbonate, clear with blue print, NSF, Made in USA.

CFS Brands Model 1195407

#140624 | FOOD STORAGE CONTAINER



Carlisle - StorPlus™
Universal Lid, fits 1/3-size
food pan, handled, solid,
stackable, temperature
range: -40° - 212°F,
dishwasher safe,
textured non-slip finish,
polycarbonate,
clear, NSF, Made in USA.

#130113 | FOOD PAN COVER CFS Brands Model 10270U07



Carlisle - StorPlus™ Food Pan,
1/3 size, 6" deep, with
integrated label,
polycarbonate, clear, NSF.

#130021 | FOOD PAN CFS Brands Model 306621MLUC07



Carlisle - StorPlus™
Food Pan, 1/3 size,
4" deep, with
integrated label,
polycarbonate,
lear, NSF.

#130025 | FOOD PAN CFS Brands Model 306611MLUC07



Carlisle - StorPlus™
Universal Lid, fits
1/6-size food pan,
handled, notched,
stackable, temperature
range: -40° - 212°F,
dishwasher safe,
textured non-slip finish,
polycarbonate, clear, NSF,
Made in USA.

#130117 | FOOD PAN COVER CFS Brands Model 10311U07



Carlisle - StorPlus™ Food Pan,
1/6 size, 6" deep, with
integrated label,
polycarbonate, clear, NSF.

#130020 | FOOD PAN CFS Brands Model 306851MLUC07



Carlisle - StorPlus™ Food Pan,
1/1 full size, 12.7 qt. capacity,
20-3/4" x 12- 3/4" x 4" deep,
molded-in capacity indicators,
temperature range: -40° - 212° F,
reinforced top & bottom corners,
spoonable bottom, dishwasher
safe, smooth interior finish,
textured non-slip exterior
finish, polycarbonate, clear,
NSF, Made in USA.

#130250 | FOOD PAN CFS Brands Model 10201B07



Carlisle - StorPlus™ Food
Pan, 1/2-size, 8.7 qt. capacity,
12-3/4" x 10-19/50" x 6" deep,
capacity indicators, easy-lift
notch, reinforced corners,
temperature range: -40° - 212°
F, chip/crackresistant,stackable,
textured non-slip finish,
dishwasher safe, polycarbonate,
clear, NSF, Made in USA

#130022 | FOOD PAN CFS Brands Model 10222B07



CFS Brands Model RG25-114

Carlisle - OptiClean™ Dishwasher Glass Rack, 25-compartment (3-1/2" x 3-1/2") with (1) extender, full-size, holds glasses up to 3-1/4" in diameter inside height of 5", doublewall construction, quick draining, positive stacking, four-way tracking, comfort curve handles on all 4 sides, polypropylene, textured finish, blue, NSF.

#140597 | GLASS DISHWASHER RACK



Winco Model PGW-1018

Wire Pan Grate, 10" x 18", full size, rectangular, chrome-plated.

#141452 | WIRE PAN RACK / GRATE



StoreSafe® Food Rotation Label, 2" x 3", blank, label & adhesive dissolves in less than 30 seconds, withstands high heat temp. up to 200° F (93° C) for 4 hours, microwave safe, 100% biodegradable, white, FDA approved (250 labels per roll).

#104365 | STICKERS (LABELS) Cambro Model 23SLINB250



CFS Brands Model RTP14

Carlisle - OptiClean™ Dishwasher Plate/Tray Peg Rack, full size, 2-15/16"H extra tall pegs, inside height of 3-1/4", plate locks, double-wall construction, quick draining, comfort curve handles on all 4 sides, polypropylene, blue, NSF.

#140600 | DISHWASHER RACK, PEG/COMBINATION



CFS Brands Model RF14

Carlisle - OptiClean™ Dishwasher Combination/Flatware Rack, full-size, 19-7/8" x 19-7/8" x 4", inside height of 3-1/4", open bottom, quick drying bottom grid, comfort curve handles, double wall construction, polypropylene, textured finish, blue, NSF.

#140602 | FLATWARE DISHWASHER RACK



CFS Brands Model RP14

Carlisle - OptiClean™ All Purpose Plate/Tray Peg Rack, full size, 2-1/4"H standard pegs, inside height of 3-1/4", plate locks, double-wall construction, quick draining, comfort curve handles on all 4 sides, polypropylene, blue, NSF.

#636051 | DISHWASHER RACK, PEG/COMBINATION



CFS Brands Model ROP14

Carlisle - OptiClean™ Dishwasher Plate/Tray Peg Rack, full size, open-end, 2-15/16"H extra tall pegs, inside height of 3-1/4", plate locks, double-wall construction, quick draining, comfort curve handles on all 4 sides, polypropylene, blue, NSF.

#143168 | DISHWASHER RACK, PEG/COMBINATION




Carlisle - StorPlus™ Food Pan, 1/6 size, 1.7 qt. capacity, 6-3/4" x 6-22/25" x 4" deep, capacity indicators, reinforced corners, textured non-slip finish, temperature range: -40° to 212° F, dishwasher safe, polycarbonate, clear, NSF, Made in USA, meets EN631-1 Euro Norm standards

#130024 | FOOD PAN CFS Brands Model 3068407



Camwear® Cover, for 6 & 8 qt. round storage container, clear, polycarbonate, NSF.

Cambro Model RFSCWC6135

#142348 | FOOD STORAGE CONTAINER COVER



Carlisle - StorPlus™ Universal Lid, for 1/6-size food pan, handled, solid, stackable, temperature range: -40° - 212° F, dishwasher safe, textured non-slip finish, polycarbonate, clear, NSF, Made in USA.


#130118 | FOOD PAN COVER CFS Brands Model 10310U07



Camwear® Cover, for 2 & 4 qt. Round storage container, clear, polycarbonate, NSF.

Cambro Model RFSCWC2135


#142345 | FOOD STORAGE CONTAINER COVER



Camwear® Storage Container, round, 6 qt., 9-15/16" dia. x 7-15/16"H, withstands temperature of -40° F to 210° F, stain resistant, molded-in handle, durable polycarbonate construction, (covers sold separately), clear, NSF

Cambro Model RFSCW6135


#142346 | FOOD STORAGE CONTAINER



Camwear® Storage Container, round, 2 QT., 8-3/16" dia. x 4-3/16"H, withstands temperature of -40° F to 210° F, stain resistant, molded-in handle, durable polycarbonate construction, (covers sold separately), clear, NSF.

Cambro Model RFSCW2135

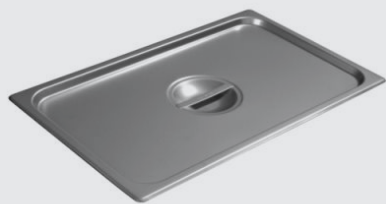
#142343 | FOOD STORAGE CONTAINER



Camwear® Storage Container, round, 4 qt., 8-3/16" dia. x 8-9/16"H, withstands temperature of -40° F to 210° F, stain resistant, molded-in handle, durable polycarbonate construction, (covers sold separately), clear, NSF.

Cambro Model RFSCW4135

#142344 | FOOD STORAGE CONTAINER



Carlisle - DuraPan™ SteamTable Pan Cover, full-size, solid, flat, lift-off, recessed handle, dishwasher safe, 24 gauge 18/8 stainless steel, NSF.

#140308 | STEAM TABLE PAN COVER, STAINLESS STEEL CFS Brands Model 607000C



Carlisle - DuraPan™ Steam Table Pan, full size, 12.5 qt., 4" deep, reinforced corners, stackable, anti-jam, dishwasher safe, 24 gauge 18/8 stainless steel, NSF.

CFS Brands Model 607004

#140304 | STEAM TABLE PAN, STAINLESS STEEL



Carlisle - DuraPan™ Steam Table Pan, full size, 8.8 qt., 2-1/2" deep, reinforced corners, stackable, anti-jam, dishwasher safe, 24 gauge 18/8 stainless steel, NSF.

CFS Brands Model 607002

#140306 | STEAM TABLE PAN, STAINLESS STEEL



Carlisle - DuraPan™ Steam Table Pan Cover, 1/2-size, slotted, flat, lift-off, recessed handle, dishwasher safe, 24 gauge 18/8 stainless steel, NSF.

CFS Brands Model 607120CS

#140320 | STEAM TABLE PAN, STAINLESS STEEL



Carlisle DuraPan™ Steam Table Pan Cover, 1/2-size, solid, flat, lift-off, recessed handle, dishwasher safe, 24 gauge 18/8 stainless steel, NSF.

CFS Brands Model 607120C

#140313 | STEAM TABLE PAN, STAINLESS STEEL



Carlisle - DuraPan™ Steam Table Pan, 1/2-size, 4 qt., 2-1/2" deep, reinforced corners, stackable, anti-jam, dishwasher safe, 24 gauge 18/8 stainless steel, NSF.

CFS Brands Model 607122

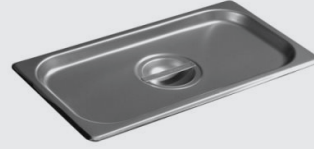
#140312 | STEAM TABLE PAN, STAINLESS STEEL



Carlisle - DuraPan™ Steam Table Pan, 1/3 - size, 4 qt., 4" deep, reinforced corners, stackable, anti-jam, dishwasher safe, 24 gauge 18/8 stainless steel, NSF.

CFS Brands Model 607134

#140315 | **STEAM TABLE PAN, STAINLESS STEEL**



Carlisle - DuraPan™ Steam Table Pan Cover, 1/3 - size, solid, flat, lift-off, recessed handle, dishwasher safe, 24 gauge 18/8 stainless steel, NSF.

CFS Brands Model 607130C

#140318 | **STEAM TABLE PAN, STAINLESS STEEL**



Carlisle - DuraPan™ Steam Table Pan, 1/6- size, 2 qt., 4" deep, reinforced corners, stackable, anti-jam, dishwasher safe, 24 gauge 18/8 stainless steel, NSF.

CFS Brands Model 607164

#140335 | **STEAM TABLE PAN, STAINLESS STEEL**



Carlisle - DuraPan™ Steam Table Pan, 1/3-size, 6 qt., 6" deep, reinforced corners, stackable, anti-jam, dishwasher safe, 24 gauge 18/8 stainless steel, NSF

CFS Brands Model 607136

#140314 | **STEAM TABLE PAN, STAINLESS STEEL**



Carlisle - DuraPan™ Steam Table Pan, 1/4-size, 2.8 qt., 4" deep, reinforced corners, stackable, anti-jam, dishwasher safe, 24 gauge 18/8 stainless steel, NSF

CFS Brands Model 607144

#140323 | **STEAM TABLE PAN, STAINLESS STEEL**



Newburg Chafer, 8 qt., full size, rectangular, mirror finish cover with lid clip, plastic handle, includes water pan, food pan and (2) fuel holders, 18/8 stainless steel

Winco Model C-3080B

#141378 | **CHAFING DISH**



Hollowick/Steelite Model EZ 6-3-8

Easy Heat® Chafing Fuel, 9.7 oz., 3-3/8" dia. x 2-3/8"H, reusable, odorless, adjustable for 3 heat options, stay cool can (24 each per case).

#48909 | CHAFING DISH FUEL



Hollowick/Steelite Model GHBLUE

Gel Heat™ Blue Chafing Fuel, 7 oz., Methanol, can, 3-3/8" dia. x 2-3/8"H, 2-1/2 hour, corrosion resistant steel can, rust free, 100% recyclable (cannot be sold anywhere in the state of Pennsylvania) (72 each per case).

#48908 | CHAFING DISH FUEL



Hollowick/Steelite Model HD26

Fuel Cell, 2" dia. x 2-1/4"H, 26 hour, disposable, plastic, clear (60 each per case).

#48911 | CANDLE, LIQUID WAX



Hollowick/Steelite Model HD36

Fuel Cell, 2-5/8" dia. x 2-3/5"H, 36 hour, disposable, plastic, clear (24 each per case).

#48912 | CANDLE, LIQUID WAX



Hollowick/Steelite Model HD50

Fuel Cell, 2-3/8" dia. x 3-5/16"H, 50 hour, disposable, plastic, clear (48 each per case).

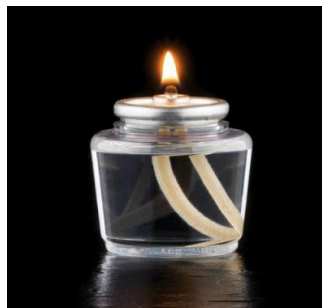
#48913 | CANDLE, LIQUID WAX



Hollowick/Steelite Model BUFF6-24

Buffet Heat Wick Chafing Fuel, 3-3/8" dia. x 2-3/8" H, 6 hours (24 per case).

#48910 | CHAFING DISH FUEL



Hollowick/Steelite Model HD15

Liquid Votive™ Fuel Cell, 1-3/4" dia. x 1-3/4"H, 15 hour, disposable, plastic, clear (96 each per case).

#48915 | CANDLE, LIQUID WAX



Adapter Bar, 12"L x 1"W,
stainless steel (Qty Break
= 12 each)

#141473 | **ADAPTER BAR** Winco Model ADB-12



Adapter Bar, 20"L x 1"W,
stainless steel (Qty Break
= 12 each)

#141474 | **ADAPTER BAR** Winco Model ADB-20



Carlisle - Compartment
Tray, 14"L x 10"W, left-
handed, rectangular,
6-compartments: (3) small
upper, (2) large lower and
(1) flatware, stain, scratch
and break resistant, dish-
washer safe, melamine,
Sandshades®, NSF.
Case pack of 1 dozen

CFS Brands Model 4398192

#140722 | **COMPARTMENT TRAY**



Chicago Platter Basket,
10-1/2" x 7-1/4" x 1-1/2",
oval, heat resistant up to
150°F/65°C, heatlamp/
dishwasher/microwave
safe, polypropylene, red,
Made in USA (36 each).

TableCraft Products Model 1076R

#143114 | **FOOD SERVING BASKET**



Chicago Platter Basket,
10-1/2" x 7-1/4" x 1-1/2",
oval, heat resistant up to
150°F /65°C, heatlamp/
dishwasher/microwave
safe, polypropylene, black,
Made in USA (36 each).

TableCraft Products Model 1076BK

#143113 | **FOOD SERVING BASKET**



Classic Basket, 9-3/8" x
6-1/4" x 1-7/8", oval, heat
resistant up to 150°F/65°C,
heat lamp/dishwasher/
microwave safe,
polyethylene, red, Made
in USA (36 each).

TableCraft Products Model 1074R

#87220 | **FOOD SERVING BASKET**





Carlisle - Bin Top Utility Cart, 500 lb. capacity, 40"L x 17-1/4"W x 33-1/2"H, (2) 3-1/2" deep bin-shelves, molded-in handle, (4) heavy duty 5" non marking casters (2 swivel/2 rigid), polypropylene, gray, KD.

CFS Brands Model UC401823

#143154 | **CART, UTILITY/BUSSING**



Carlisle - Utility Cart, 500 lb. capacity, 27"L x 18"W x 32- 1/2"H, open design, (3) shelves, (2) with raised edges, (1) push handle, non-marking soft rubber bumpers, tig welded, (4) swivel casters, 18/10 stainless steel (29-3/4" OA length with handle)

CFS Brands Model UC5031827

#143129 | **CART, UTILITY/BUSSING**



Carlisle - Bus Cart, 36"L x 18"W, 300 lb. capacity, (3) textured shelves, raised edges, open sides/enclosed ends, (1) bus box will fit on each shelf, dual sided push handles, 4" heavy-duty non-marking swivel casters, polypropylene, black, NSF (Assembly Required)

CFS Brands Model CC203603

#130096 | **CART, UTILITY/BUSSING**



Service Cart, open design, (3) shelves, shelf size approximately 15-7/8" x 24-3/8", polyethylene exterior, 4"cast-ers (4 swivel, no brake), 300 lb. load capacity, speckled gray, KD

Cambro Model BC331KD480

#130094 | **CART, UTILITY/BUSSING**



Carlisle - Comfort Curve™ Bus Box, 1 compartment, 20"L x 15"W x 7"H, reinforced rims, stackable, Comfort Curve™ handles, dishwasher safe, high density polyethylene.

#140612 | **BUS BOX / TUB** CFS Brands Model 44011SKD03



Carlisle - Comfort Curve™ Bus Box, 1 compartment, 20"L x 15"W x 7"H, reinforced rims, stackable, Comfort Curve™ handles, dishwasher safe, high density polyethylene, gray, NSF.

#140615 | **BUS BOX / TUB** CFS Brands Model 4401123



Carlisle - Comfort Curve™ Universal Bus Box Lid, 20"L x 15"W x 3/4"H, contoured, snapon, dishwasher safe, polypropylene, gray, NSF

CFS Brands Model 4401223

#140613 | **BUS BOX / TUB COVER**



CFS Brands Model 5501-207

Carlisle - Stackable™ Tumbler, 5 oz. (5.20 oz. flush fill), tapered, textured exterior, stain/break/chip resistant, dishwasher safe, stackable, recyclable, SAN, clear, BPA Free, NSF, Made in USA. Case pack of 2 dozen.

#140072 | **TUMBLER**



CFS Brands Model 5506-207

Carlisle - Stackable™ Tumbler, 9-1/2 oz. (9.20 oz. flush fill), tapered, textured exterior, stain/break/chip resistant, dishwasher safe, stackable, recyclable, SAN, clear, BPA Free, NSF, Made in USA. Case pack of 2 dozen.

#140074 | **TUMBLER**



CFS Brands Model 5212-207

Carlisle - Stackable™ Tumbler, 12 oz. (13.40 oz. flush fill), tapered, textured exterior, stain/break/chip resistant, dishwasher safe, stackable, recyclable, SAN, clear, BPA Free, NSF, Made in USA. Case pack of 2 dozen.

#140075 | **TUMBLER**



CFS Brands Model 5216-207

Carlisle - Stackable™ Tumbler, 16 oz. (17.70 oz. flush fill), tapered, textured exterior, stain/break/chip resistant, dishwasher safe, stackable, recyclable, SAN, clear, BPA Free, NSF, Made in USA. Case pack of 2 dozen.

#140076 | **TUMBLER**



Anchor Hocking Foodservice Model 176FU

Mixing Glass, 16 oz., 3-1/4 dia. x 5-7/8" H, tapered, glass, clear (2 dozen per case)

#D79045 | **MIXING GLASS**



CFS Brands Model 5220-207

Carlisle - Stackable™ Tumbler, 20 oz. (22.30 oz. flush fill), tapered, textured exterior, stain/break/chip resistant, dishwasher safe, stackable, recyclable, SAN, clear, BPA Free, NSF, Made in USA. Case pack of 2 dozen.

#140078 | **TUMBLER**



Easy-Hold Tray, 22" x 27", oval, rubber lined, plastic, black, NSF.

Winco Model TRH-2722K

#143208 | NON-SKID SERVING TRAY



Cash & Carry Ice Scoop, dishwasher safe, stainless steel

TableCraft Products Model H512

#140658 | SCOOP



San Jamar - Saf-T-Ice® Tote, 6 gallon, polycarbonate, rubber handle, with tri-grip feature, includes Saf-T-Ice® HACCP hanger for elevation to waist level, NSF. lid not included.

CFS Brands Model SI6000

#88372 | ICE TOTE



Carlisle - Tulip Dessert Dish, 5 oz., 3-3/4" dia., scalloped edge, dishwasher safe, stain/chip/break resistant, stackable, recyclable, SAN, clear, NSF, Made in USA. Case pack of 2 dozen.

CFS Brands Model 453007

#140047 | SUNDAE DESSERT DISH



Carlisle - VersaPour® Pitcher, 60 oz., contoured lip design, ergonomic handle & thumb grip, break-resistant, dishwasher safe, polycarbonate, clear, BPA Free, NSF, Made in USA

CFS Brands Model 554007

#140100 | PITCHER



Airpot, 2.5 liter, stainless steel liner, lever-top, double wall insulated, heat retention: 10 hours at 175°F and 24 hours at 151°F, swivel base, includes: (4) colored identification tags, stainless steel body, satin finish

#140376 | AIRPOT Winco Model APSK-725





CFS Brands Model 84104423

#765001 | **COMMERCIAL WASTE CONTAINER**



CFS Brands Model 84104523

#765002 | **TRASH RECEPTACLE LID / TOP**

Carlisle - Bronco™ Waste Bin Trash Container, 44 gallon, 36-3/5" H x 24-1/3" dia., round, stackable, double-reinforced stress ribs, ergonomic handles, integrated bag cinches, drag skids, deep hand holds on base, polyethylene, gray, NSF, Made in USA.

Carlisle - Bronco™ Waste Bin Trash Container Lid, round, 2-3/10" H x 24-16/25" dia. (27" overall dia.) heavy-duty, snap down tab locks, for 44 gallon container, polyethylene, gray, NSF, Made in USA



CFS Brands Model 84103223

#140890 | **COMMERCIAL WASTE CONTAINER**



CFS Brands Model 84103323

#141182 | **TRASH RECEPTACLE LID / TOP**

Carlisle - Bronco™ Waste Bin Trash Container, 32 gallon, 28" H x 21-2/5" dia., round, stackable, double-reinforced stress ribs, ergonomic handles, integrated bag cinches, drag skids, deep hand holds on base, polyethylene, gray, NSF, Made in USA.

Carlisle - Bronco™ Waste Bin Trash Container Lid, round, 2" H x 22" dia. (24-12/25" overall dia.) heavy-duty, snap down tab locks, for 32 gallon container, polyethylene, gray, NSF, Made in USA.



CFS Brands Model 84102102

#139048 | **TRASH RECEPTACLE LID / TOP**

Carlisle - Bronco™ Waste Bin Trash Container Lid, round, 1-22/25" H x 19-4/5" dia. (21-3/5" overall dia.) heavy-duty, snap down tab locks, for 20 gallon container, polyethylene, white, NSF, Made in USA.



CFS Brands Model 3691103

#765350 | **TRASH RECEPTACLE, DOLLY**

Carlisle - Bronco™ Container Dolly, round, 6" H x 17-3/4" dia., twist-to-lock, non-marking 3" swivel press-fit casters, fits 20, 32, 44 & 55 gal containers, polyethylene, black, NSF.



CFS Brands Model 34202403

#143162 | **TRASH RECEPTACLE LID / TOP**



CFS Brands Model 34202303

#143161 | **TRASH RECEPTACLE, INDOOR**

Carlisle - Bronco™ Waste Bin Trash Container, 20 gallon, 23" H x 19-9/20" dia., round, stackable, double-reinforced stress ribs, ergonomic handles, integrated bag cinches, drag skids, deep hand holds on base, polyethylene, white, NSF, Made in USA.

Carlisle - Trimline™ Swing Top Lid, rectangular, fits 15/23 gallon Trimline™ waste containers, ABS plastic, black.

Carlisle - Trimline™ Waste Container, 23 gallon, rectangular, integrated corner tabs, bottom helper handles, heavy-duty, polyethylene, black.



CFS Brands Model 84102002

#139047 | **COMMERCIAL WASTE CONTAINER**



CFS Brands Model R4000TBK

San Jamar - Classic® Bath Tissue Dispenser, 19"W x 5-1/4"D x 12"H, fits (2) 9" jumbo rolls, full swing replaceable cover, sliding panel, see-thru gauge, break & chemical resistant plastic, translucent black pearl.

#83155 | TOILET TISSUE DISPENSER



CFS Brands Model R2000TBK

San Jamar - Classic® Bath Tissue Dispenser, 10-1/4"W x 5-5/8"D x 12"H, fits (1) 9" jumbo roll, translucent black pearl.

#83157 | TOILET TISSUE DISPENSER



CFS Brands Model R3500TBK

San Jamar - Classic® Duett Bath Tissue Dispenser, 7-1/2"W x 7"D x 12-3/4"H, fits (2) 4-1/2" to 5-1/2" rolls, break-resistant plastic, see-thru gauge, full swing replaceable cover & lock, translucent black pearl.

#83158 | TOILET TISSUE DISPENSER



CFS Brands Model T420TLI

San Jamar - Towel Dispenser, 10-3/4"W x 10-1/4"D x 13-1/4"H, wall mount, center pull, holds hygienic touchless dispensing, adjustable funnel with (7) different settings, adjust to all grades of paper, lockable swing door, impact-resistant plastic, black.

#83164 | PAPER TOWEL DISPENSER



CFS Brands Model T1700TBK

San Jamar - Ultrafold™ Paper Towel Dispenser, 11-3/4"W x 6-1/4"D x 18"H, holds cfold/multifold towels, translucent black pearl.

#83161 | PAPER TOWEL DISPENSER



CFS Brands Model T7400TBK

San Jamar - Simplicity Essence™ Hands Free Classic Paper Towel Dispenser, 12-3/8"W x 9-1/2"D x 14-5/8"H, wall mount, with lock, automatic mechanical cutting, consistent 10" portion of roll towel, fits (1) 8" wide roll, no batteries required, impact resistant plastic, translucent black pearl.

#83160 | PAPER TOWEL DISPENSER



CFS Brands Model KPP97RD

#140331 | **BUCKET**

San Jamar - Kleen-Pail® Pro™, 3 qt., rounded corners, molded-in handles, drop handle, embossed lettering, graduated markings, debris catching ribs, raised bottom, trilingual design, dishwasher safe, plastic, meets HACCP guidelines, red, NSF.



CFS model is KPP256RD

#143059 | **BUCKET**

San Jamar - Kleen-Pail® Pro™, 8 qt., rounded corners, molded-in handles, drop handle, embossed lettering, graduated markings, debris catching ribs, raised bottom, trilingual design, dishwasher safe, plastic, meets HACCP guidelines, red, NSF.



Winco Model MPB-36

#141477 | **MOP BUCKET WRINGER COMBINATION**

Mop Bucket, with wringer, 36 qt., yellow.



Winco Model BR-319

#141475 | **BRUSH, WIRE**

Wire Brush, 14" O.A.L., 3 x 19 rows of wire, steel bristles, wood handle



CFS Brands Model 4046103

#111480 | **GLASSWASHER, BRUSH TYPE**

Carlisle - Sparta® Triple Glass Washer, 8" long, 6" L x 2-7/8" dia. round triple heads, heavyduty stapleset polyester bristles, threaded stems on molded white plastic base with positive suction, black, BPA Free.



Krowne Model M7548K

#141558 | **GAS CONNECTOR HOSE KIT / ASSEMBLY**

Royal Series Moveable Gas Connection Kit, 3/4" I.D., 48" long, stainless steel corrugated tubing & radial wrap with green antimicrobial PVC coating, quick disconnect, (1) full port gas valve, (2) 90° elbows, restraining cable with mounting hardware, 180,000 BTU/hr minimum flow capacity.



Winco Model IB-27

Ingredient Bin, 27 gallon, 15-1/2" x 29-1/2" x 28", transparent polycarbonate lid, clasp sliding lid, scoop, 3" caster wheels (2 with brakes), polypropylene body, white, NSF.

#143209 | **INGREDIENT BIN**



Frymaster/Dean Model 8030002

Frymaster®/Dean® Filter Powder, box of 80, 1 ounce packs.

#104212 | **FRYER FILTER POWDER**



Frymaster/Dean Model 8030284

Frymaster®/Dean® Filter Paper, 16-3/8" x 24-3/8", box of 100 sheets, for re-orders of original MF90/80LP and PF95LP models.

#915650 | **FILTER PAPER**



Frymaster/Dean Model 8030289

Frymaster®/Dean® Filter Paper, 22" x 34", for 50/60UFF equipped, box of 100 sheets.

#D80289 | **FILTER PAPER**



Frymaster/Dean Model 8030170

Frymaster®/Dean® Filter Paper, 19-1/2" x 27-1/2", box of 100 sheets, for Footprint Filter systems.

#104211 | **FILTER PAPER**



CFS Brands Model 4029400

Carlisle - Double Broiler King Brush, 48" L (OA), bolted dual-sided heads: 1-5/8" carbon steel flat bristles and 1-5/8" carbon steel wire bristles, hardwood handle, standard color

#130050 | **BROILER / GRILL BRUSH**



TableCraft Products Model N32A

Cash & Carry PourMaster® Complete Unit, quart, assorted color-coded caps, 2 of each color: brown, green, red, orange, white & yellow, includes: container, PourMaster® Long Neck Top™ & StorMaster™ cap, dishwasher safe, polyethylene, BPA free, NSF. dishwasher safe, plastic, white.

#143031 | DRINK BAR MIX POURER COMPLETE UNIT



Proctor-Silex® Pop-Up Toaster, (4) extra wide slots, toast boost, front crumb trays, 1.75kW, 120v/60/1-ph, NSF, 1 year warranty.

#141224 | POP-UP TOASTER Hamilton Beach Model 24850R



TableCraft Products Model 6565004

High Chair, 19-3/4" x 19-3/4" x 29"H, stackable, washable replaceable 3-point seatbelt, front passive restraint, rubberwood, natural, ASTM F404-18 compliant, unassembled.

#140070 | HIGH CHAIR



Cactus Mat Model 5000-R35

VIP Red Cloud Anti-Fatigue Mat, 3' x 5', 3/4" thick, closed-cell nitrile textured rubber with drainage holes, tapered safety edge all sides, grease & slip resistant, for kitchens, cooklines, bars, prep areas, waitress pick-up, assembly lines, & behind counters, lightweight, red.

#D5000 | ANTI-FATIGUE FLOOR MAT

