



EXPRESS PRODUCE

Your Partner

IN HIGH QUALITY PRODUCE



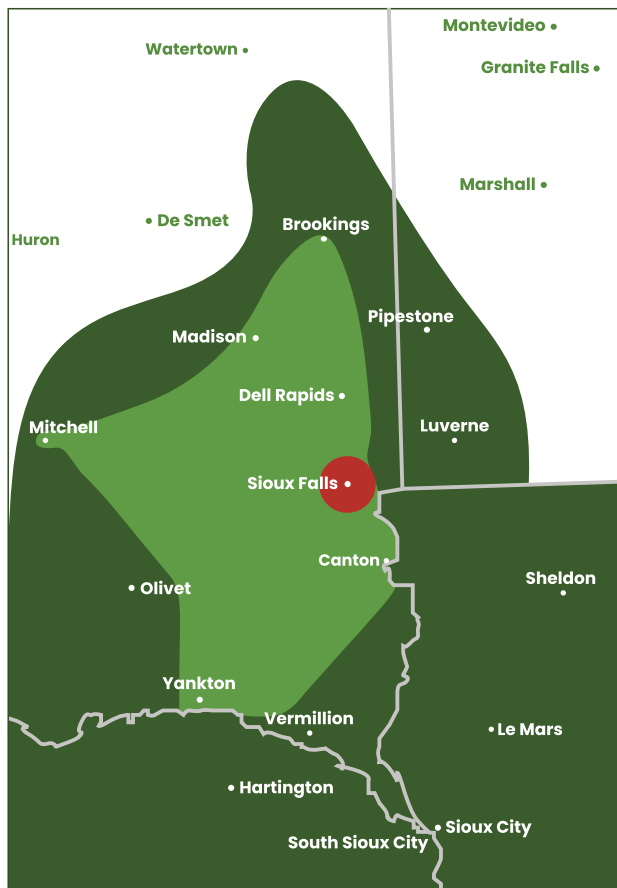


EXPRESS PRODUCE

ACCESS *Exceptional* PRODUCTS & SERVICE

We have a high-touch culture where personal connections are a priority. Your orders are hand-selected, transported at the perfect temperature on trucks with no freezers and delivered in a timely manner. Browse our core product selection and place your order with your rep or via our app.

Ask your rep about our unique, seasonal ingredients and other staples for your kitchen.



- Same Day Delivery
- Next Day Delivery
- Service Coming Soon

[f /ExpressProduceSD](#)
[in /company/express-produce](#)
[express-produce.com](#)
605.336.8336

VEGETABLES



EXPRESS PRODUCE

CARROTS

180215	50#	Carrots <i>Jumbo</i>
180212	25#	Carrots <i>Jumbo</i>
180218	4/5#	Carrots <i>Baby</i>
180211	30/1#	Carrots <i>Baby</i>
180214	200/1.6oz	Carrots <i>Baby</i>
180753	4/5#	Carrots <i>Shredded</i>
180786	4/5#	Carrot <i>Sticks</i>

LETTUCE/ROMAINE/SPINACH/KALE

180257	24ct	Leaf Lettuce
180847	4/2#	Lettuce <i>Better Burger Leaf</i>
180247	2/5#	Lettuce <i>Green Leaf Washed/Trim</i>
180242	24ct	Lettuce <i>Head Iceberg Cello</i>
180244	24ct	Lettuce <i>Head Iceberg Liner</i>
180469	3/1#	Lettuce <i>Heritage Blend</i>
180658	24ct	Lettuce <i>Kale</i>
180587	4/1#	Lettuce <i>Kale Chopped</i>
180251	24ct	Lettuce <i>Romaine</i>
180777	6/2#	Lettuce <i>Romaine Chopped</i>
180433	48ct	Lettuce <i>Romaine Hearts</i>
180411	4/5#	Lettuce <i>Salad Mix Plain Chopped</i>
180411	4/5#	Lettuce <i>Salad Mix w/separate color</i>
180253	4/5#	Lettuce <i>Salad Mix w/Romaine</i>
180412	4/5#	Lettuce <i>Shred 1/8"</i>
180414	1/3#	Lettuce <i>Spring Mix</i>
101745	4/3#	Lettuce <i>Spring Mix</i>
180417	1/4#	Spinach <i>Baby</i>
180367	4/2.5#	Spinach <i>Cello Stem</i>

ONIONS

180528	12ct	Leeks
180770	4/2#	Onions <i>Green Iceless</i>
180289	25#	Onions <i>Red Jumbo</i>
180614	50#	Onions <i>Red Jumbo</i>
780289	5#	Onions <i>Red Jumbo</i>
180281	50#	Onions <i>Sweet Vidalia</i>
180282	50#	Onions <i>White Jumbo</i>
780282	5#	Onions <i>White Jumbo</i>
180285	50#	Onions <i>Yellow Medium</i>
780285	10#	Onions <i>Yellow Medium</i>
180287	50#	Onions <i>Yellow Jumbo</i>
780287	10#	Onions <i>Yellow Jumbo</i>
180286	50#	Onions <i>Yellow Colossal</i>

PEPPERS

180259	Bushel	Peppers <i>Green Bell Choice</i>
180655	1/8#	Peppers <i>Habanero</i>
180436	Bushel	Peppers <i>Jalapeno</i>
180435	1/10#	Peppers <i>Jalapeno</i>
180390	Bushel	Peppers <i>Red Bell</i>
780390	1/5#	Peppers <i>Red Bell</i>
780258	5#	Green Pepper
780260	5#	Gold Pepper
180387	10#	Anaheim Pepper

POTATOES

180337	50#	Potatoes <i>Idaho 60ct Baker</i>
180343	50#	Potatoes <i>Idaho 70ct Baker</i>
180342	50#	Potatoes <i>Idaho 80ct Baker</i>
180297	50#	Potatoes <i>Idaho 90ct Baker</i>
180296	50#	Potatoes <i>Idaho 100ct Baker</i>
180335	50#	Potatoes <i>Idaho 110ct Baker</i>
180299	50#	Potatoes <i>Red Jumbo</i>
180317	50#	Red Potatoes
180294	40#	Yams <i>#1 45ct</i>
180617	40#	Yams <i>#1 55ct</i>

TOMATOES

180350	2 Layer	Tomatoes <i>4X5</i>
180358	2 Layer	<i>4x5</i> Tomatoes
180353	1 Layer	Tomatoes <i>5X6</i>
180351	2 Layer	Tomatoes <i>5X6</i>
180340	25# Bulk	Tomatoes <i>6X6</i>
180345	10#	Tomatoes
180348	12/Pint	Tomatoes <i>Cherry</i>
180356	12/10 oz	Tomatoes <i>Grape</i>
180349	25# Bulk	Tomatoes <i>Roma</i>
180608	25# Bulk	Tomatoes <i>Roma #2</i>
180319	25# Bulk	Tomatoes <i>Salsa (Kitchen #2)</i>
180354	40#	Tomatillo



VEGETABLES & HERBS



EXPRESS PRODUCE

MUSHROOMS

180375	1/10#	Mushrooms <i>Button</i>
180653	1/5#	Mushrooms <i>Crimini</i>
180393	1/10#	Mushrooms <i>Foodservice</i>
180374	1/10#	Mushrooms <i>Medium</i>
180654	1/5#	Mushrooms <i>Portabella Baby</i>
180659	1/5#	Mushrooms <i>Portabella Sliced</i>
180656	1/3#	Mushrooms <i>Shitake #2</i>
180657	1/10#	Mushrooms <i>Silver Dollar 2.5"</i>
180373	2/5#	Mushrooms <i>Thin Sliced 1/4"</i>
180382	5#	Large <i>Portabella Caps</i>

FRESH HERBS

180497	4#	<i>Arugula</i>
180456	1#	<i>Basil</i>
180618	4oz	<i>Bay Leaves</i>
180458	1#	<i>Chives</i>
180455	30ct	<i>Cilantro Fresh</i>
180454	4/1#	<i>Cilantro Cleaned/Trimmed Cello</i>
180597	60ct	<i>Cilantro</i>
180459	1#	<i>Dill</i>
180377	4/5#	<i>Garlic Whole Peeled</i>
180452	1#	<i>Mint</i>
180482	4oz	<i>Mint</i>
180496	1#	<i>Oregano</i>
180438	60ct	<i>Parsley</i>
180490	1#	<i>Parsley</i>
180514	1#	<i>Rosemary</i>
180515	1#	<i>Sage</i>
180516	1#	<i>Thyme</i>
180032	5#	<i>Shallot Peeled</i>

OTHER VEGETABLES

180006	11/1#	<i>Asparagus Standard</i>
180127	2#	<i>Avocados</i>
180129	Carton	<i>Avocados #1</i>
180662	2/5#	<i>Beans Green Snipped</i>
180522	25#	<i>Beet</i>
180369	14ct	<i>Broccoli</i>
180370	20#	<i>Broccoli Crowns</i>
180651	4/3#	<i>Broccoli Florets</i>
51048	25#	<i>Bulk Brussel Sprouts</i>
180198	50#	<i>Cabbage Green Medium</i>
780198	10#	<i>Cabbage Green Medium</i>
180205	50#	<i>Cabbage Red</i>
780205	10#	<i>Cabbage Red</i>
180416	4/5#	<i>Cabbage Slaw Mix w/Carrot</i>
180217	12ct	<i>Cauliflower</i>
180750	2/3#	<i>Cauliflower Florets</i>
180225	13ct	<i>Celery Pascal Sleeved</i>
780225	6ct	<i>Celery Pascal Sleeved</i>
180504	4/5#	<i>Celery Sticks</i>
180256	Bushel	<i>Cucumbers Select</i>
180255	24ct	<i>Cucumbers Super Select</i>
180250	12ct	<i>Cucumbers English (Hydro)</i>
780255	6ct	<i>Cucumbers Select</i>
180359	14/1#	<i>Radish Cello</i>
180220	18-20#	<i>Squash Yellow Medium</i>
780220	5#	<i>Squash Yellow Medium</i>
180221	18-20#	<i>Squash Zucchini Medium</i>
780221	5#	<i>Squash Zucchini Medium</i>
180384	10#	<i>Peas Sno</i>
180524	10#	<i>Peas Sugar Snap</i>



FRUIT



EXPRESS PRODUCE

APPLES/PEARS

180105	Carton	Apple Fuji
180095	Carton	Apple Gala 113/125ct
180091	Carton	Apple Golden Delicious 110/113ct
180179	Carton	Apple Granny Smith 125/138ct
180116	Carton	Apple Honey Crisp 110/125ct
101080	Carton	Apple Pink Lady 125ct
180088	Carton	Apple Red Delicious 125/138ct
180097	Carton	Apple Red Delicious 100/113ct
180584	Case	Apples Sliced 100/2oz
180128	Carton	Pear, Fancy Anjou 120ct
180328	Carton	Pear Bartlett Red 45ct



BERRIES

180011	12/6oz	Blackberries
180396	12/6oz	Blueberries
180133	1 Layer	Kiwi 33/39ct
101548	Carton	Kiwi 117ct
180010	12/6oz	Raspberries
180001	8/1#	Strawberries

CITRUS

101454	10/3#	Clementines
180054	48ct	Grapefruits
780062	12ct	Lemons Choice
180063	140ct	Lemons <i>Seedless</i>
180067	140ct	Lemons
180061	Carton	Limes 200ct
780061	12ct	Limes
780063	10#	Limes
180060	40#	Limes 110ct
180061	200ct	Limes
101430	25ct	Limes
180009	Carton	Oranges Navel 88ct
180015	Carton	Oranges Navel 113ct
101485	10#	Oranges Navel

OTHER FRUIT

180002	40#	Bananas <i>Green Tip</i>
980002	10#	Bananas <i>CRT 24ct</i>
180124	9/12ct	Cantaloupe
180806	1/5#	Fruit Mix (<i>Cant/Honeydew/Pineapple</i>)
180185	5#	Grapes <i>Green Seedless</i>
780185	5#	Green Grapes
180184	5#	Grapes <i>Red Seedless</i>
780184	5#	Red Grapes
180126	5-6ct	Honeydew
180139	54-56ct	Nectarines <i>2-Layer Seasonal</i>
980136	24# avg	Peaches <i>2-Layer Seasonal</i>
180132	6-8ct	Pineapple <i>Premium</i>
980141	28#	Plums <i>Seasonal</i>
180156	2ct	Watermelon



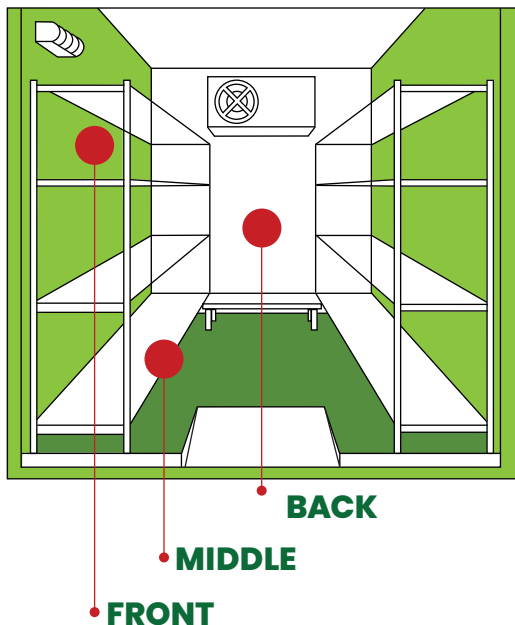


YOUR PRODUCE *Partner*

Storage tips to prolong the life of fresh produce

Temperature is the single most important factor in maintaining and maximizing produce quality. For every ten degree increase in temperature, a produce item can lose up to half of its life and will thus be served in a less than optimal condition, especially produce served uncooked.

Produce labeled in **red** are items are extremely sensitive to ethylene gas. Isolate from other produce.



FRONT 39-54°

Beans (<i>Snap</i>)	Avocados (<i>Ripe</i>)
Bell Peppers	Cucumber
Chile Peppers	Eggplant
Ginger Root	Herbs—Basil
Honeydew	Grapefruit
Oranges & Tangerines	Guava
Pineapple	Lemons & Limes
Potatoes	Mango
Tomatillos	Papaya
Watermelon	Squash (<i>Soft Shell</i>)

BACK 32-34°

Berries	Brussels Sprouts
Corn	Cabbage & Bok Choy
Figs	Carrots
Fresh-Cut Produce	Celery
Garlic (<i>Fresh Peeled</i>)	Herbs (<i>Except Basil</i>)
Greens	Iceberg Lettuce
Juices	Kale
Parsnips	Leaf Lettuce
Peas	Nectarines
Radishes	Peaches
Rhubarb	Pears (<i>Ripe</i>)
Apples	Plums
Apricots	Spinach

MIDDLE 35-58°

Artichokes	Mushrooms
Beets	Parsley
Broccoli	Turnips
Carambola	Asparagus
Cherries	Cantaloupe
Coconuts	Cauliflower
Cranberries	Kiwifruit
Grapes	Watercress
Green Onions	

OUTSIDE COOLER 55-65°

Beans (<i>Snap</i>)
Garlic (<i>Fresh Unpeeled</i>)
Onions
Pears (<i>Unripe</i>)
Plantains
Pumpkins
Tomatoes (<i>Ripe</i>)
Tomatoes (<i>Green</i>)
Avocados (<i>Unripe</i>)
Bananas
Shallots
Squash (<i>Hard Shell</i>)
Sweet Potatoes



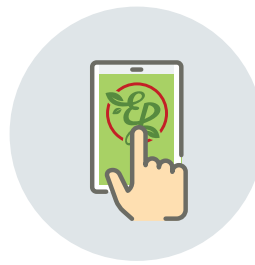
Impressive **QUALITY & SELECTION**

Get fresh produce delivered the same or next day. From potatoes, lettuce, onions & tomatoes to unique, seasonal ingredients.



FACE TO FACE INTERACTIONS

With Sales and Delivery Staff
We have a high-touch culture.



CONVENIENT ORDERING

With Your Rep or Via the App
Low minimum orders welcome.



HAND-PICKED PRODUCE

By Your Delivery Driver
with Care
We accept only the highest quality.



ON-TIME DELIVERY

Via Trucks at
Perfect Temps
*No freezers means no
freezer burnt produce.*

